

June 2023

London Luton Airport Expansion

Planning Inspectorate Scheme Ref: TR020001

Volume 5 Environmental Statement and Related Documents
5.03 Chapter 16 Noise and Vibration Figures 16.17a - 16.21

Application Document Ref: TR020001/APP/5.03

APFP Regulation: 5(2)(a)

The Planning Act 2008

The Infrastructure Planning (Applications: Prescribed Forms and Procedure) Regulations 2009

London Luton Airport Expansion Development Consent Order 202x

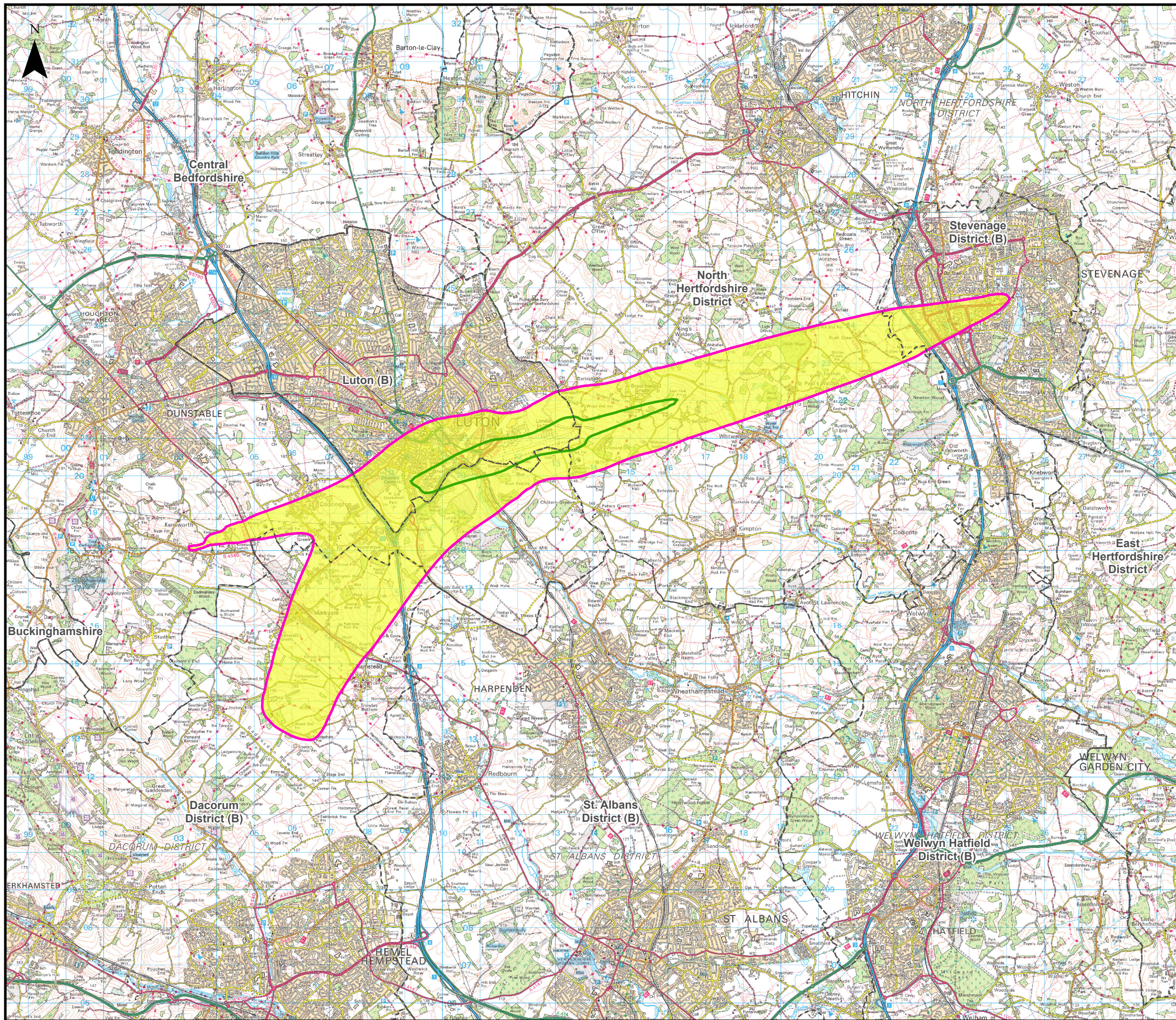
5.03 ENVIRONMENTAL STATEMENT CHAPTER 16 NOISE AND VIBRATION FIGURES 16.17a – 16.21

Regulation number:	Regulation 5(2)(a)
Planning Inspectorate Scheme Reference:	TR020001
Document Reference:	TR020001/APP/5.03
Author:	Luton Rising

Version	Date	Status of Version
Issue 01	February 2023	Application issue
Revision 01	June 2023	Additional submissions (updated in response to Rule 9 letter)

Contents

Figure 16.17a	Change in 2027 Do-Something - Do-Minimum Daytime LAeq,16h Air Noise Contours
Figure 16.17b	Change in 2027 Do-Something - Do-Minimum Daytime LAeq,16h Air Noise Contours (Significant Observed Adverse Effect Level (SOAEL) Area)
Figure 16.18a	Change in 2027 Do-Something - Do-Minimum Night-time LAeq,8h Air Noise Contours
Figure 16.18b	Change in 2027 Do-Something - Do-Minimum Night-time LAeq,8h Air Noise Contours (Significant Observed Adverse Effect Level (SOAEL) Area)
Figure 16.19	Extent of All Assessment Years Do-Minimum Daytime Overflight Contours up to 4,000 feet
Figure 16.20	Extent of All Assessment Years Do-Minimum Night-time Overflight Contours up to 4,000 feet
Figure 16.21	Extent of 2027 Do-Something Daytime Overflight Contours up to 4,000 feet



This drawing may contain mapping by permission of Ordnance Survey on behalf of HMSO © Crown Copyright and database rights 2022 Ordnance Survey 0100031673

All structure positions are indicative. The proposed works will be subject to detailed design development. The changes will be within limits of deviation specified in the Development Consent Order.

Legend

Local Authority Boundaries

Change in 2027 Do-Something - Do-Minimum Daytime LAeq,16h Air Noise Contours in Decibels (dB)

- 0.1 to 0.9 dB
- 1.0 to 1.9 dB
- 2.0 to 2.9 dB
- 3.0 dB or more

Air Noise Contours in Decibels (dB) (2027 Do-something Daytime LAeq,16h)

- 51dB - Lowest Observed Adverse Effect Level (LOAEL)
- 63dB - Significant Observed Adverse Effect Level (SOAEL)

Additional submissions (updated in response to Rule 9 letter)	LP	CSH	CS	21/06/23	P02
First Issue	MAB	CSH	CS	31/01/23	P01
Revision History	Drawn	Checked	Approved	Date	Rev.

Luton Rising Our airport. Our community. Our planet.

Luton Rising
Hart House Business Centre
Kimpton Road, Luton, LU2 0LA
www.lutonrising.org.uk

London Luton Airport Expansion Development Consent Order

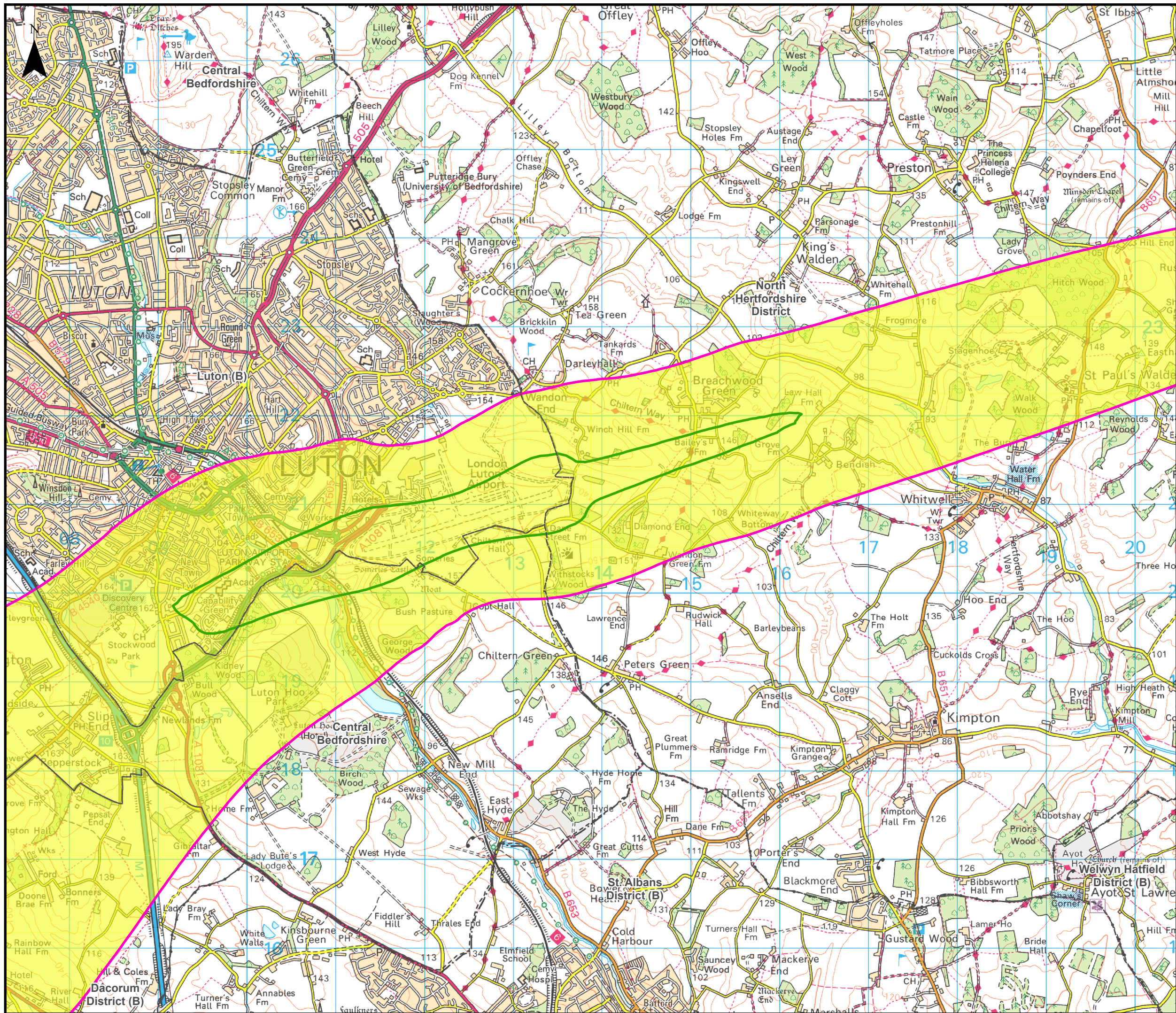
Drawing Title: Figure 16.17a
Change in 2027 Do-Something - Do-Minimum Daytime LAeq,16h Air Noise Contours

Purpose of issue	Additional submissions (updated in response to Rule 9 letter)				Suitability
Drawn	Checked	Approved	Date	Scale	Size
MAB	CSH	CS	21/06/23	1:95,000	A3

DCO Application Ref.	APFP Regulation	DCO Document Ref.
TR020001	APFP 5(2)(a)	TR020001/APP/5.03

Drawing Number	Revision
LLADCO-3C-AEC-00-00-DR-YE-0017	P02

Project - Phase - Originator - Asset/Zone - Sub Asset - Type- Discp. - Number



This drawing may contain mapping by permission of Ordnance Survey on behalf of HMSO © Crown Copyright and database rights 2022 Ordnance Survey 0100031673

All structure positions are indicative. The proposed works will be subject to detailed design development. The changes will be within limits of deviation specified in the Development Consent Order.

Legend

Local Authority Boundaries

Change in 2027 Do-Something - Do-Minimum Daytime LAeq,16h Air Noise Contours in Decibels (dB)

- 0.1 to 0.9 dB
- 1.0 to 1.9 dB
- 2.0 to 2.9 dB
- 3.0 dB or more

Air Noise Contours in Decibels (dB) (2027 Do-something Daytime LAeq,16h)

- 51dB - Lowest Observed Adverse Effect Level (LOAEL)
- 63dB - Significant Observed Adverse Effect Level (SOAEL)

Additional submissions (updated in response to Rule 9 letter)	LP	CSH	CS	21/06/23	P02
First Issue	MAB	CSH	CS	31/01/23	P01
Revision History	Drawn	Checked	Approved	Date	Rev.

Luton Rising Our airport. Our community. Our planet.
 Luton Rising
 Hart House Business Centre
 Kimpton Road, Luton, LU2 0LA
 www.lutonrising.org.uk

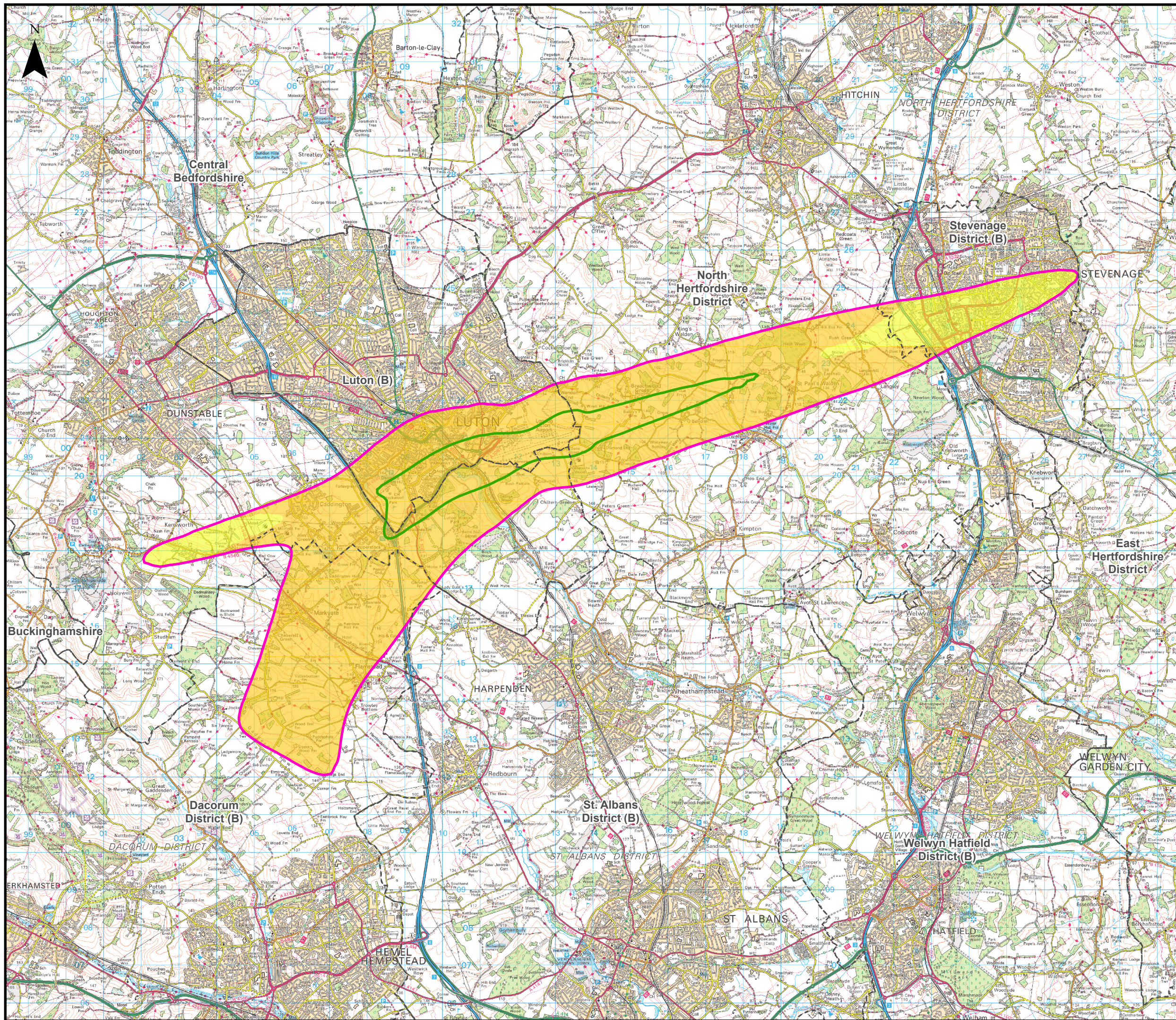
London Luton Airport Expansion Development Consent Order

Drawing Title: Figure 16.17b
 Change in 2027 Do-Something - Do-Minimum Daytime LAeq,16h Air Noise Contours (Significant Observed Adverse Effect Level (SOAEL) Area)

Purpose of issue	Additional submissions (updated in response to Rule 9 letter)				Suitability
Drawn	Checked	Approved	Date	Scale	Size
MAB	CSH	CS	21/06/23	1:40,000	A3

DCO Application Ref.	APFP Regulation	DCO Document Ref.
TR020001	APFP 5(2)(a)	TR020001/APP/5.03

Drawing Number	Revision
LLADCO-3C-AEC-00-00-DR-YE-0097	P02
Project - Phase - Originator - Asset/Zone - Sub Asset - Type- Discp. - Number	



This drawing may contain mapping by permission of Ordnance Survey on behalf of HMSO © Crown Copyright and database rights 2022 Ordnance Survey 0100031673

All structure positions are indicative. The proposed works will be subject to detailed design development. The changes will be within limits of deviation specified in the Development Consent Order.

Legend

Local Authority Boundaries

Change in 2027 Do-Something - Do-Minimum Night-time LAeq,8h Air Noise Contours in Decibels (dB)

- 0.1 to 0.9 dB
- 1.0 to 1.9 dB
- 2.0 to 2.9 dB
- 3.0 dB or more

Air Noise Contours in Decibels (dB) (2027 Do-something Night-time LAeq,8h)

- 45dB - Lowest Observed Adverse Effect Level (LOAEL)
- 55dB - Significant Observed Adverse Effect Level (SOAEL)

Additional submissions (updated in response to Rule 9 letter)	LP	CSH	CS	21/06/23	P02
First Issue	MAB	CSH	CS	31/01/23	P01
Revision History	Drawn	Checked	Approved	Date	Rev.

Luton Rising Our airport. Our community. Our planet.

Luton Rising
Hart House Business Centre
Kimpton Road, Luton, LU2 0LA
www.lutonrising.org.uk

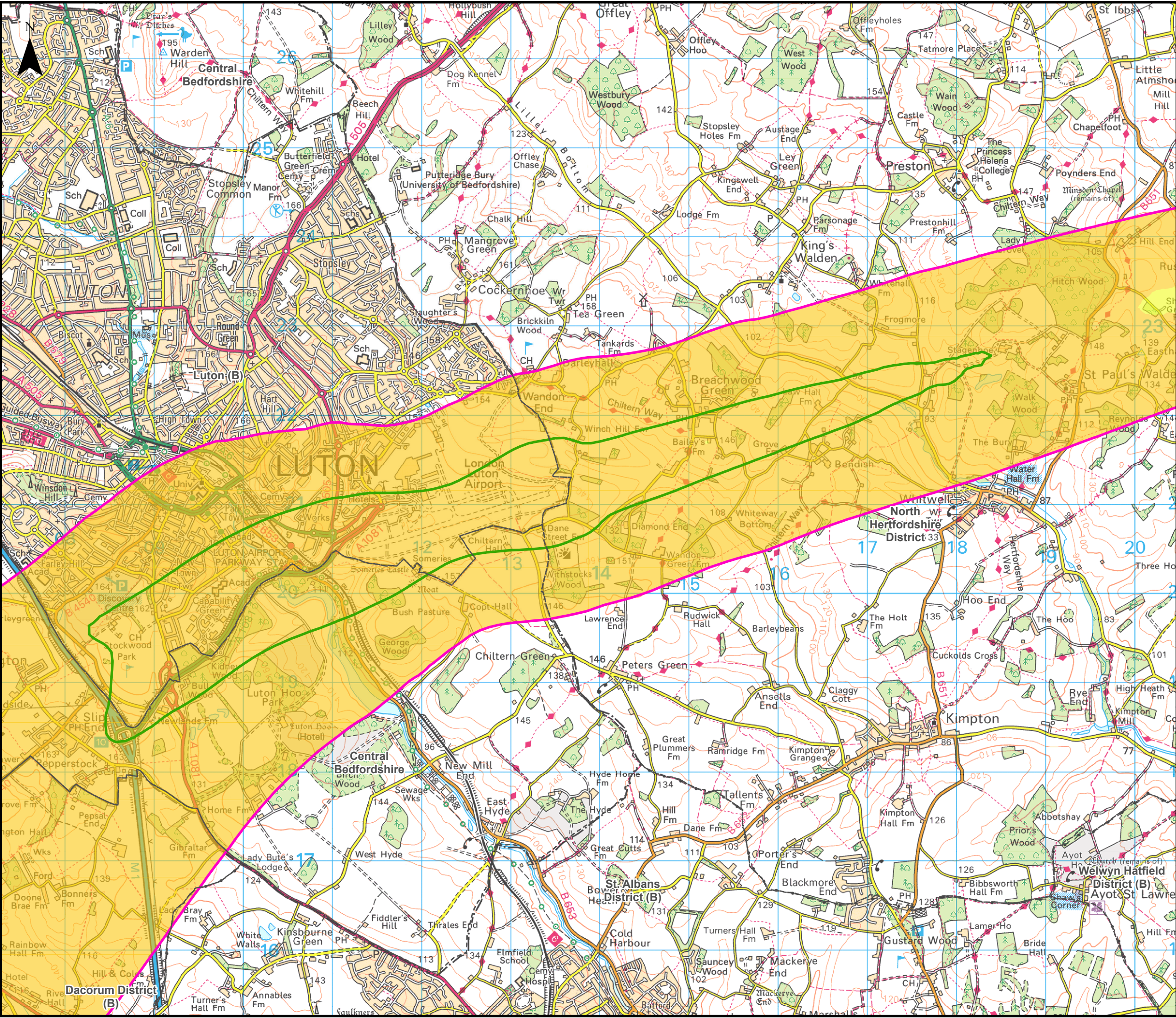
London Luton Airport Expansion Development Consent Order

Drawing Title: Figure 16.18a
Change in 2027 Do-Something - Do-Minimum Night-time LAeq,8h Air Noise Contours

Purpose of issue	Additional submissions (updated in response to Rule 9 letter)				Suitability
Drawn	Checked	Approved	Date	Scale	Size
MAB	CSH	CS	21/06/23	1:95,000	A3

DCO Application Ref.	APFP Regulation	DCO Document Ref.
TR020001	APFP 5(2)(a)	TR020001/APP/5.03

Drawing Number	Revision
LLADCO-3C-AEC-00-00-DR-YE-0018	P02
Project - Phase - Originator - Asset/Zone - Sub Asset - Type- Discp. - Number	



This drawing may contain mapping by permission of Ordnance Survey on behalf of HMSO © Crown Copyright and database rights 2022 Ordnance Survey 0100031673
 All structure positions are indicative. The proposed works will be subject to detailed design development. The changes will be within limits of deviation specified in the Development Consent Order.

Legend

- Local Authority Boundaries

Change in 2027 Do-Something - Do-Minimum Night-time LAeq,8h Air Noise Contours in Decibels (dB)

- 0.1 to 0.9 dB
- 1.0 to 1.9 dB
- 2.0 to 2.9 dB
- 3.0 dB or more

Air Noise Contours in Decibels (dB) (2027 Do-something Night-time LAeq,8h)

- 45dB - Lowest Observed Adverse Effect Level (LOAEL)
- 55dB - Significant Observed Adverse Effect Level (SOAEL)

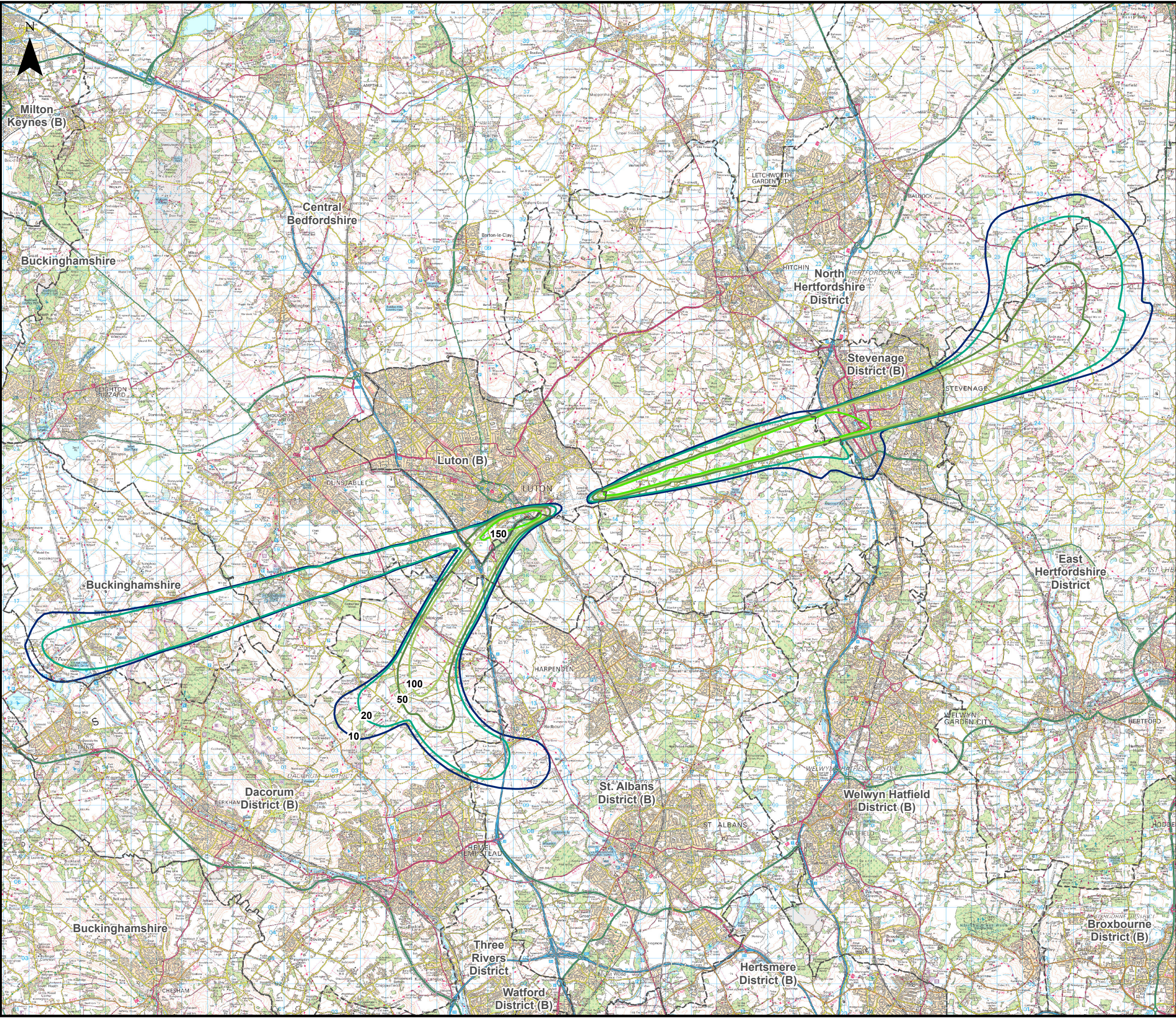
Additional submissions (updated in response to Rule 9 letter)	LP	CSH	CS	21/06/23	P02
First Issue	MAB	CSH	CS	31/01/23	P01
Revision History	Drawn	Checked	Approved	Date	Rev.

Luton Rising Our airport. Our community. Our planet.

Luton Rising
 Hart House Business Centre
 Kimpton Road, Luton, LU2 0LA
 www.lutonrising.org.uk

London Luton Airport Expansion Development Consent Order

Drawing Title						Figure 16.18b					
Change in 2027 Do-Something - Do-Minimum Night-time LAeq,8h Air Noise Contours (Significant Observed Adverse Effect Level (SOAEL) Area)											
Purpose of issue					Suitability						
Additional submissions (updated in response to Rule 9 letter)					S2						
Drawn	Checked	Approved	Date	Scale	Size						
MAB	CSH	CS	21/06/23	1:40,000	A3						
DCO Application Ref.		APFP Regulation		DCO Document Ref.							
TR020001		APFP 5(2)(a)		TR020001/APP/5.03							
Drawing Number										Revision	
LLADCO-3C-AEC-00-00-DR-YE-0098										P02	
Project - Phase - Originator - Asset/Zone - Sub Asset - Type- Discp. - Number											



This drawing may contain mapping by permission of Ordnance Survey on behalf of HMSO © Crown Copyright and database rights 2022 Ordnance Survey 0100031673
 All structure positions are indicative. The proposed works will be subject to detailed design development. The changes will be within limits of deviation specified in the Development Consent Order.

Legend

Local Authority Boundaries

Number of overflights per day (07:00 – 23:00) up to 4,000ft (All assessment years Do-Minimum)

- 10
- 20
- 50
- 100
- 150

Additional submissions (updated in response to Rule 9 letter)	LP	CSh	CS	16/06/23	P02
First Issue	MAB	CSh	CS	31/01/23	P01
Revision History	Drawn	Checked	Approved	Date	Rev.

Luton Rising Our airport. Our community. Our planet.

Luton Rising
 Hart House Business Centre
 Kimpton Road, Luton, LU2 0LA
www.lutonrising.org.uk

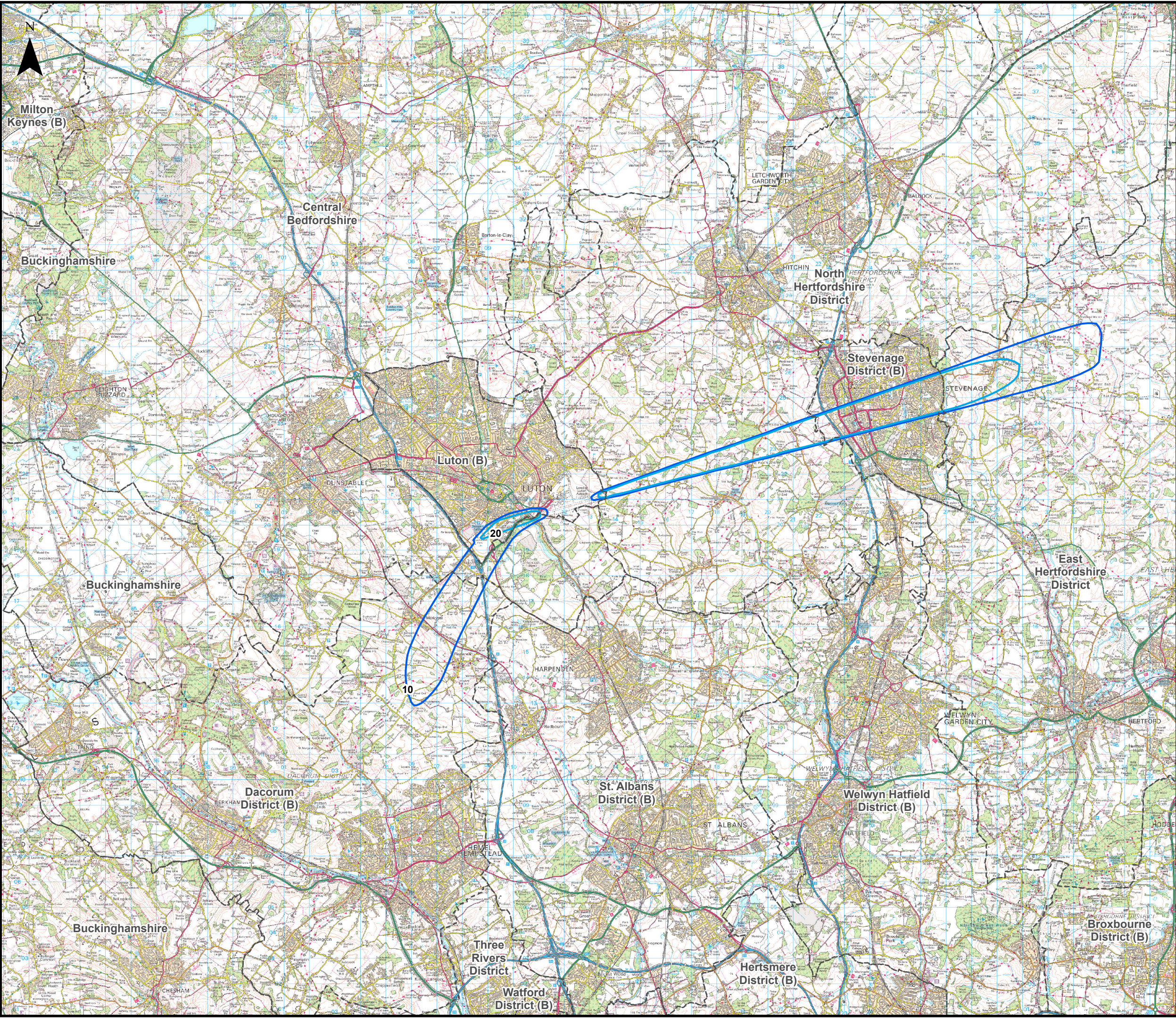
London Luton Airport Expansion Development Consent Order

Drawing Title: **Figure 16.19**
 Extents of All assessment years Do-Minimum Daytime Overflight Contours up to 4,000 feet

Purpose of issue				Suitability	
Additional submissions (updated in response to Rule 9 letter)				S2	
Drawn	Checked	Approved	Date	Scale	Size
MAB	CSh	CS	16/06/23	1:140,000	A3

DCO Application Ref.	APFP Regulation	DCO Document Ref.
TR020001	APFP 5(2)(a)	TR020001/APP/5.03

Drawing Number	Revision
LLADCO-3C-AEC-00-00-DR-YE-0019	P02
Project - Phase - Originator - Asset/Zone - Sub Asset - Type- Discp. - Number	



This drawing may contain mapping by permission of Ordnance Survey on behalf of HMSO © Crown Copyright and database rights 2022 Ordnance Survey 0100031673
 All structure positions are indicative. The proposed works will be subject to detailed design development. The changes will be within limits of deviation specified in the Development Consent Order.

Legend

--- Local Authority Boundaries

Number of overflights per night (23:00 – 07:00) up to 4,000ft (All assessment years Do-Minimum)

10

20

Additional submissions (updated in response to Rule 9 letter)	LP	CSH	CS	16/06/23	P02
First Issue	MAB	CSH	CS	31/01/23	P01
Revision History	Drawn	Checked	Approved	Date	Rev.

Luton Rising Our airport. Our community. Our planet.

Luton Rising
 Hart House Business Centre
 Kimpton Road, Luton, LU2 0LA
 www.lutonrising.org.uk

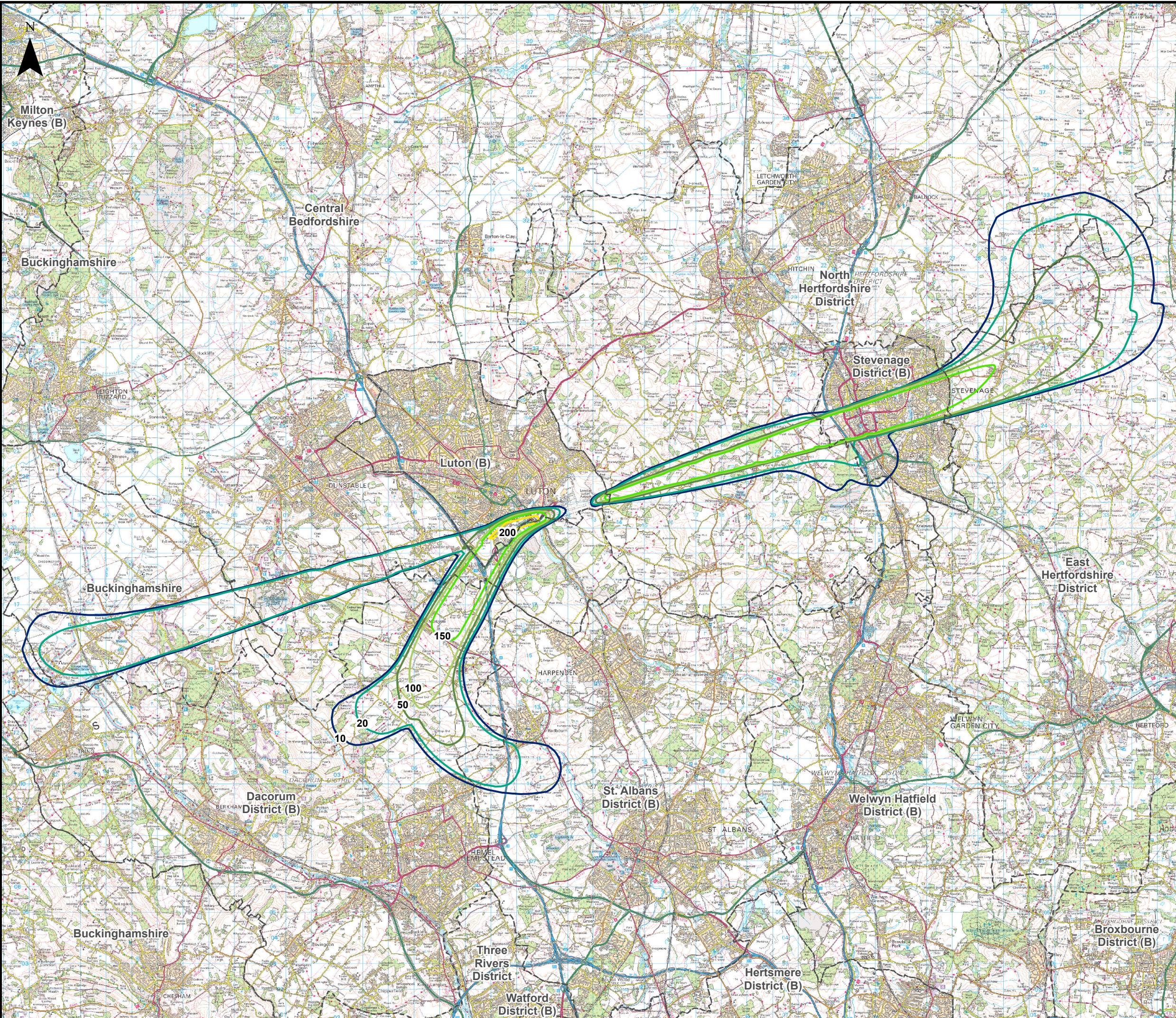
London Luton Airport Expansion Development Consent Order

Drawing Title
 Figure 16.20
 Extents of All assessment years Do-Minimum Night-time Overflight Contours up to 4,000 feet

Purpose of issue				Suitability	
Additional submissions (updated in response to Rule 9 letter)				S2	
Drawn	Checked	Approved	Date	Scale	Size
MAB	CSH	CS	16/06/23	1:140,000	A3

DCO Application Ref.	APFP Regulation	DCO Document Ref.
TR020001	APFP 5(2)(a)	TR020001/APP/5.03

Drawing Number	Revision
LLADCO-3C-AEC-00-00-DR-YE-0020	P02
Project - Phase - Originator - Asset/Zone - Sub Asset - Type- Discp. - Number	



This drawing may contain mapping by permission of Ordnance Survey on behalf of HMSO © Crown Copyright and database rights 2022 Ordnance Survey 0100031673

All structure positions are indicative. The proposed works will be subject to detailed design development. The changes will be within limits of deviation specified in the Development Consent Order.

Legend

- Local Authority Boundaries
- Number of overflights per day (07:00 – 23:00) up to 4,000ft (2027 Do-Something)**
- 10
- 20
- 50
- 100
- 150
- 200

Additional submissions (updated in response to Rule 9 letter)	LP	CSh	CS	16/06/23	P02
First Issue	MAB	CSh	CS	31/01/23	P01
Revision History	Drawn	Checked	Approved	Date	Rev.

Luton Rising Our airport. Our community. Our planet.

Luton Rising
Hart House Business Centre
Kimpton Road, Luton, LU2 0LA
www.lutonrising.org.uk

London Luton Airport Expansion Development Consent Order

Drawing Title: **Figure 16.21**
Extent of 2027 Do-Something Daytime Overflight Contours up to 4,000 feet

Purpose of issue				Suitability	
Additional submissions (updated in response to Rule 9 letter)				S2	
Drawn	Checked	Approved	Date	Scale	Size
MAB	CSh	CS	16/06/23	1:140,000	A3

DCO Application Ref.	APFP Regulation	DCO Document Ref.
TR020001	APFP 5(2)(a)	TR020001/APP/5.03

Drawing Number	Revision
LLADCO-3C-AEC-00-00-DR-YE-0021	P02
Project - Phase - Originator - Asset/Zone - Sub Asset - Type- Discp. - Number	